

Arthuret and Kirkandrews on Esk Community Plans



Contents

Page 2	Chairman's Introduction
Page 3	Arthuret Community Plan Introduction
Page 4	Kirkandrews-on-Esk Plan Introduction
Page 5	Arthuret Parish background and History
Page 7	Brief outline of Kirkandrews on Esk Parish and History
Page 9	Arthuret Parish Process
Page 12	Kirkandrews on Esk Parish Process
Page 18	The Action Plan



Chairman's Introduction

Welcome to the Arthuret and Kirkandrews on Esk Community Plan – a joint Community Action Plan for the parishes of Arthuret and Kirkandrews on Esk. The aim is to encourage local people to become involved in ensuring that what matters to them – their ideas and priorities – are identified and can be acted upon.

The Arthuret and Kirkandrews on Esk Community Plan is based upon finding out what you value in your community. Then, based upon the process of consultation, debate and dialogue, producing an Action Plan to achieve the aspirations of local people for the community you live and work in.

The consultation process took several forms including open days, questionnaires, workshops, focus group meetings, even a business speed dating event. The process was interesting, lively and passionate, but extremely important and valuable in determining the vision that you have for your community. The information gathered was then collated and produced in the following Arthuret and Kirkandrews on Esk Community Plan.

The Action Plan aims to show a balanced view point by addressing the issues that you want to be resolved and celebrating the successes we have achieved.

It contains a range of priorities from those which are aspirational to those that can be delivered with a few practical steps which will improve life in our community.

Arthuret and Kirkandrews on Esk Parish Councils will now use the Action Plan as an important working document in addressing the issues and priorities you have identified. Success in achieving your aims can only be done with your help and co-operation.

The Action Plan is a “live” working document and subject to regular review by both Arthuret and Kirkandrews Parish Councils to ensure that your priorities are not dismissed or forgotten.

The work that has gone into producing this action plan has been considerable but very rewarding. We would like to sincerely thank all those who have contributed, in particular the members of the Community Plan Group. This Action Plan is a tribute to your time, energy, community spirit and vision.

William Bundred
Nigel Williamson

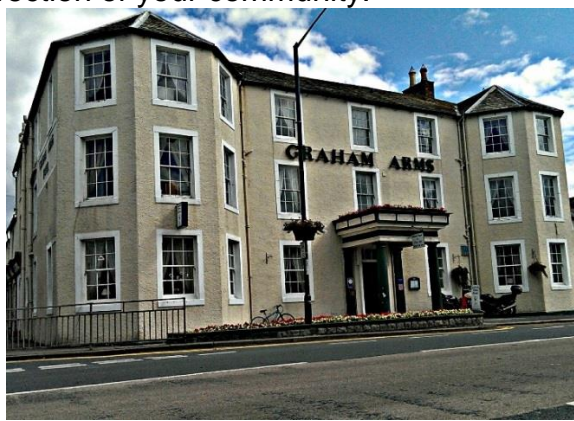


Longtown is a small rural market town, 6 miles north of Carlisle, the closest town in Cumbria to the border between England and Scotland. The River Esk flows through Longtown before it enters the Solway Firth. The town centre is a conservation area with broad straight tree lined streets laid out in the 1700's.

Arthuret Parish covers an area of 12955 acres [5243 ha], population in 2011 of 2,470 and 1135 households. Many people work locally in Agriculture, Forestry, Peat Processing, Haulage, Tourism, Local Shops and Services and also at the Auction Mart and the Ministry of Defence.



The Arthuret Community Plan is exclusively based on the views and needs expressed by local people. These views and needs are real and do matter. Arthuret Parish has challenges, it is no different in that regard to any other community, but it has a strong spirit and potential that with appropriate levels of support will stand it in very good stead. It is clear that you wish to have your say - and rightly so - in influencing the future direction of your community.



The Arthuret Community plan is about building a thriving and better place to live and work. It is about making the future better for all. We have reached this point, based on wide ranging consultation, with the community and have recorded well over 1,500 responses in total. These were obtained from open days, discussions, meetings, focus groups, surveys, questionnaires etc. This clearly illustrates the tremendous involvement and support that you have, and want to have, in planning the future of your community.



Reaching the goals set out in the Arthuret Community Plan can only be successfully achieved with your continued help and support. This is an active, working document which now passes into the remit of Arthuret Parish Council. The Action Plan will be updated on an ongoing basis for the next 10 years, but will be reviewed annually.

It is only right and fitting that I extend a warm thank you to all of you who have contributed to the Arthuret Community Plan. I am also deeply indebted to the considerable efforts, dedication and unstinting work undertaken by the Arthuret Community Plan Group.

Nigel Williamson
Chair



Kirkandrews-on-Esk Plan

Introduction

All parish councils and community groups in the Longtown area were invited to attend a meeting about community and parish planning in Longtown.

A Parish Plan isn't just a piece of paper. It's an evolving, working document. It tells us where the parish is now and records the wishes of the people that the parish council represents. It allows you to monitor progress and it allows us to set priorities and goals.

Kirkandrews on Esk parish council formally agreed to go ahead with a Parish Plan.

We hoped to find solutions to existing problems; provide evidence of need in the parish to help us to lobby on behalf of residents and inform residents about this parish and encourage community involvement.

Initially three Parish councils formed a cluster – Arthuret, Kingmoor and Kirkandrews, each hoping to create our own action plan, but with some areas of co-operation.
(Kingmoor has since dropped out)

Working along with Arthuret made sense as many Kirkandrews residents go into Arthuret for school, health services, shopping, business and entertainment and Longtown spills into our parish. Grant funding was obtained from Voluntary Action Cumbria.

We delivered leaflets to every household in the parish to explain what we were doing and invited people to drop-ins at the Moat Village Hall and Longtown Auction Mart. We also sent out questionnaires to every household and were delighted that 40% of them were returned. That data has been processed and formulated into the document you see today.

This has been a learning experience as none of us had been involved in anything like it before. With the backing of the Parish Council, Councillors William Armstrong, William Bundred and Jane Rutherford made up our Parish Plan working group.

The Parish Council has already been working on many of the issues raised by your questionnaire responses, though it may seem like a long time since you filled in your questionnaire and you have our sincere apologies for this delay.

The Parish Plan could not have happened without you. Thank you to everyone who took time to reply, or came to our drop-ins. Thank you, too, to all those who have supported this endeavour in other ways.

The Parish Plan questionnaire went to 208 households in the parish. We had 81 replies, plus comments left at the drop-ins, which is an excellent response. Thank you.

Roughly 60% of residents who responded had lived in the parish for more than 10 years.

Another 25% had lived here for between 3 and 10 years.

14% had lived in the parish for up to three years at the time they replied to the questionnaire.



ARTHURET PARISH HISTORICAL BACKGROUND

Longtown has a rich history and heritage

The Romans had a fort at Netherby, it was known as CASTRA EXPLORATORUM.

A charter for a weekly market was granted in 1306 and a yearly fair at the Feast of St Giles on the 1st September.

Border Reivers roamed the area for 300 years ruling the Debatable Lands, making it an area of continual dispute. Many of the descendants of the Reiver families still live in the area.

The barony of Liddel or Esk was bought by Richard Graham in 1628.

Longtown in 1688 had a dozen houses built of clay and the 'courthouse or townhall' which was stone built and slated.

Bonnie Prince Charlie and his army crossed the river by the ford in 1745.

In 1754 a road bridge was built across the river Esk replacing this ford. This was a vital link to Scotland and for many years the most Westerly bridge across the Esk. Until Telford's Metal bridge was opened in 1822 between Garriestown and Mossband.

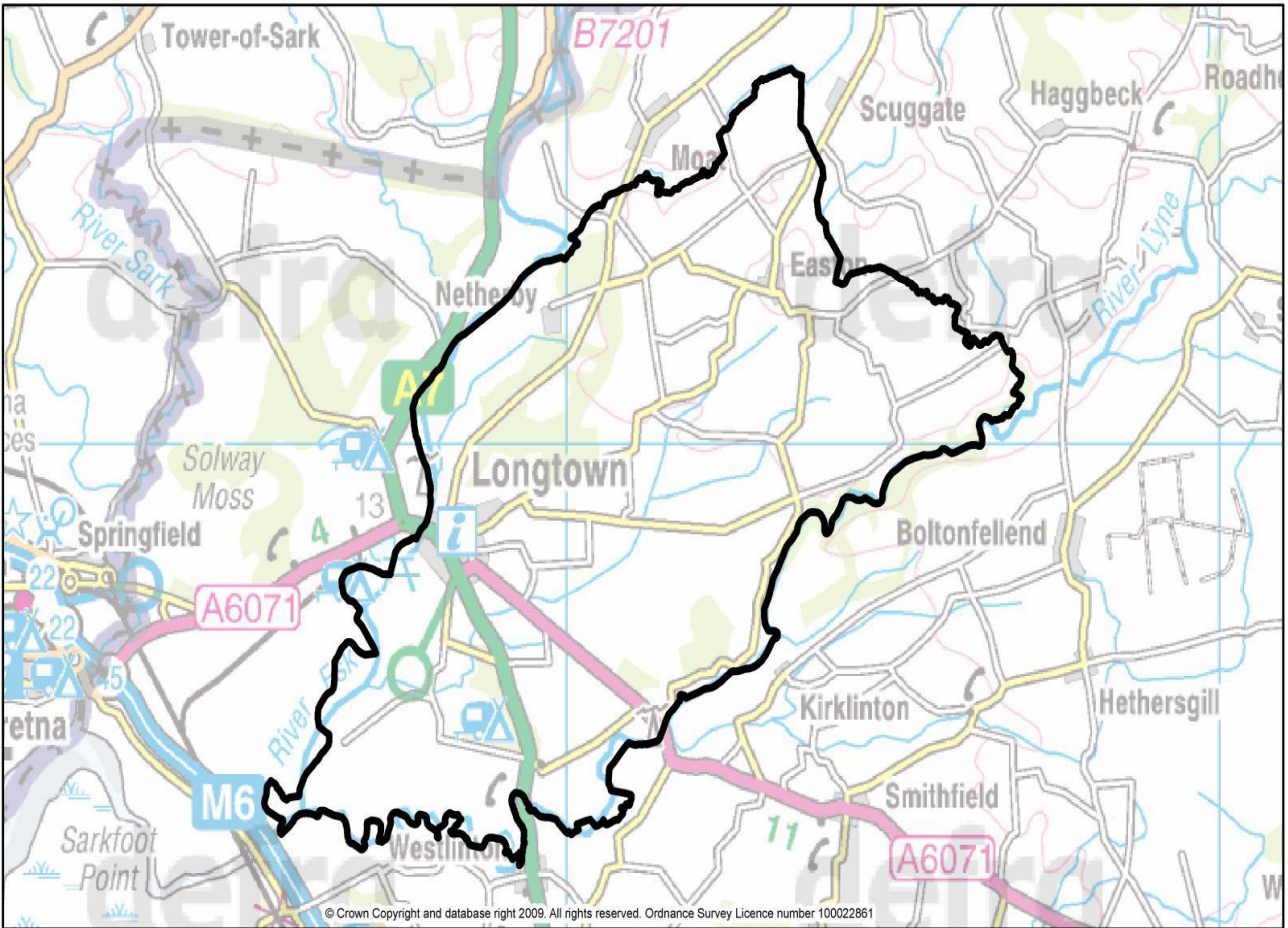
Dr Robert Graham who inherited the Netherby Estate in 1757 built the Longtown we see today.

In 1862 a railway bridge was built over the River Esk at Longtown. This became vitally important during World War 1 for the transportation of ammunition from the Gretna Munitions Factory. The railway closed in 1969.

Cumberland and Dumfriesshire Farmers Auction Mart opened on the far side of the river in 1926 and became the largest sheep auction in the country. The epidemic of foot and mouth disease in 2001 had a devastating effect on 'The Mart' and the agricultural economy of the local area.



Arthuret Parish



Source: 2001 Census Output Area boundaries. Crown Copyright.
Crown Copyright material is reproduced with the permission of the controller of HMSO
Produced by Oxford Consultants for Social Inclusion, www.oci.co.uk, May 2010



Brief outline of Kirkandrews on Esk Parish and History

Boundaries of the Parish

The boundary starts in the West where the channels of the Rivers Sark & Esk meet in the Solway. It then follows the River Esk upriver to where it meets the Carwinley Burn, along the Carwinley Burn just to the East of the Hillback Bridge on the High Plains to Pedderhill road. Here it turns North towards the Liddel Water which it meets East of The Inch. Here it becomes not only the parish boundary, but also the Border between Scotland & England. The boundary goes down the Liddel Water & River Esk to Scotsdyke. It then follows Scotsdyke to the River Sark & down the River Sark to its confluence with the River Esk in the Solway.

The parish covers an area of 10891 acres [4407 ha]

In 2011 there were 195 households & a population of 495.

The West Coast Main Rail line, M6, A7 & A6071 are the main routes through the parish.

Businesses and Employment

Since the establishment of the Munitions site in the Southwest of the parish during WW1, this has been a significant employer.

The area just to the North of the bridge over the Esk has a number of firms including a livestock market, [the largest sheep auction site in Europe], a large haulage firm, agriculture supply firms & other companies.

Other businesses in the parish include the Solway Peat Works, where peat has been extracted for centuries, a market garden, camping & caravan sites at Moat & Gaitle, hotels at the Scotsdyke & Sark Bridge, numerous farms, with agriculture occupying a large part of the of the parish.

Leisure

Walks Various footpaths **Fishing** Gravel pits, Rivers

History

Parish contains English part of the Debatable Land. It was laid waste not only by the Reivers, also in various wars between England & Scotland.

Historical Sites and Events

Liddel Strength mentioned 1174 destroyed 1346.

Kirkandrews Church & graveyard.

Battle of Solway Moss 1542.

Kirkandrews Tower built c1530-1550.

Partition of Debatable Land & Scotsdyke built 1552.

Esk Bridge built 1756 at Longtown.

Eruption of Solway Moss 1771.

Coop House Riots 1783.

Metal bridge built 1820 across the Esk at Mossband.

Waverley railway line, built 1859-1862 closed 1969, it passed over Liddel Viaduct & Thistle Viaduct.

Munitions site spanning the Border built during WW1.

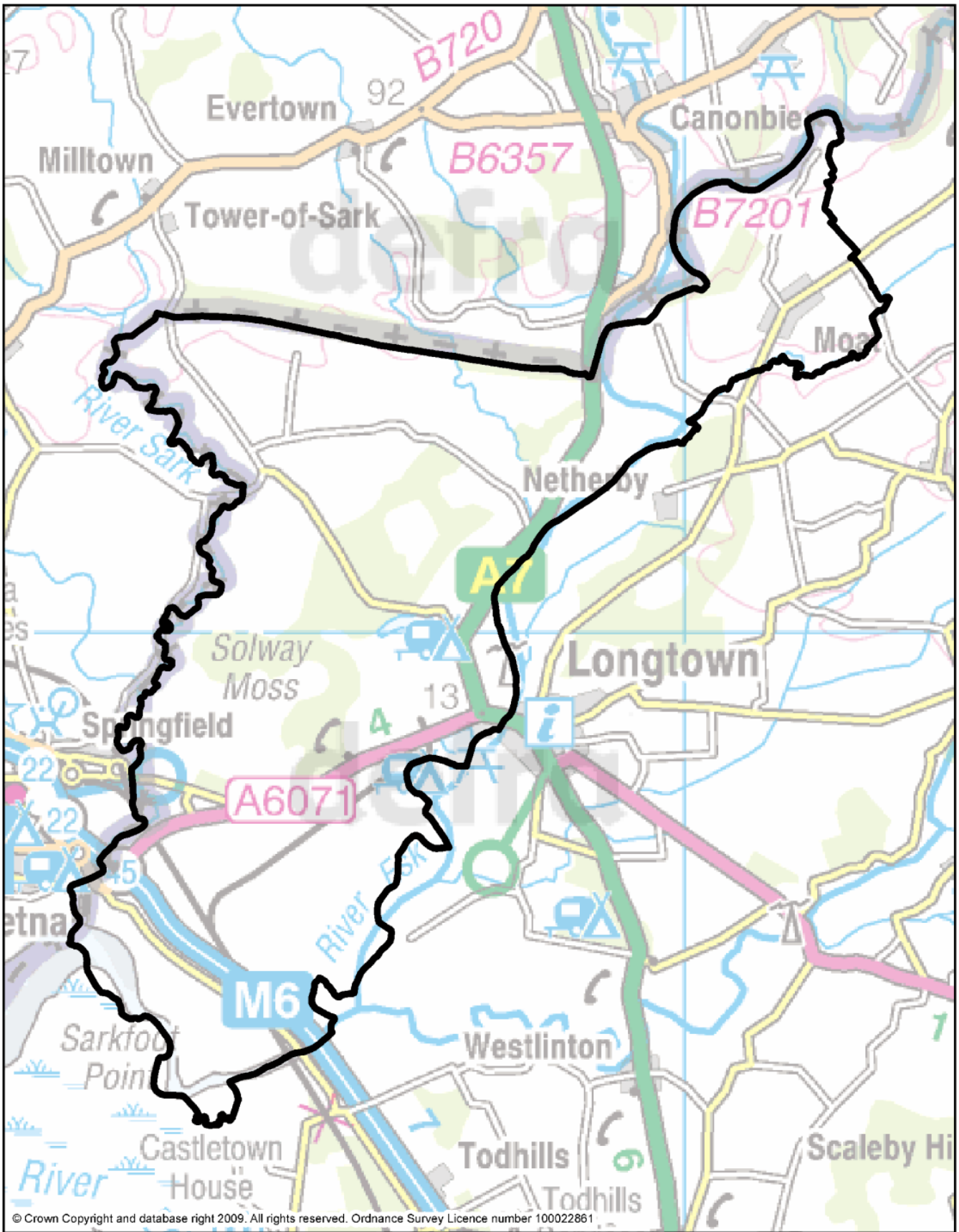
Historical Ownership

Part of the Barony of Liddel created in 12th century By Ranulph de Meschin earliest holder Turgis de Brundos passed by descent to Stuteville, Bigot & Wake families. Through the Wake family to the Crown, administered by the Duchy of Lancaster. Occupied in 16th century by the Graham clan. Granted to the Earl of Cumberland in 1603 who sold it to Richard Graham 1628 who was created 1st Baronet of Esk in 1629.

Passed to Rev Robert Graham in 1757, his son James was created the 1st Baronet of Netherby in 1783. The Netherby Estate was mostly sold during the early 20th century.



Kirkandrews Parish



Source: 2001 Census Output Area boundaries. Crown Copyright.
Crown Copyright material is reproduced with the permission of the controller of HMSO
Produced by Oxford Consultants for Social Inclusion, www.ocsi.co.uk, May 2010

Arthuret Parish Process

Arthuret Parish Council met with other parish councils in the area and as a result of a Working Group was set up. Financial help was obtained from Defra helped by Voluntary Action Cumbria (now ACT), County Council through a Neighbourhood Forum grant, City Council, Parish Council, and Market Town Initiative.

Although there was representation on the group of the parish council we wanted to encourage as many local representatives from the community to be involved. This was essential to get together a final working document that will work for our community in the future. Throughout the process of putting together the plan we have had the support and input of the Rural Support Officers at Carlisle City Council and ACT.

We consulted and listened to the community through a number of different ways. Two Community Open Days were held at the Community Centre generating a lot of feedback.

- The youth groups and other local organisations also presented us with their comments on a number of issues.
- Meeting with the School Council of Longtown Primary School, we gained an insight of what the children would like to see in their community. Many of the children, through pictures, helped us identify what is good and bad about Longtown. Some of these pictures have been used in this document.
- We met with William Howard School Pupils at the school who presented a list of ideas and issues that they felt would improve Longtown.
- Highway issues were identified through the Longtown and Bewcastle Neighbourhood Forum.

All of the issues in this document have been identified by the community. Through this information we have been able to outline how your ideas for the future can be achieved.

The closure of Lochinvar School and subsequent Longtown Moving Forward initiative gave us access to additional information. We have included this in the plan. We were aware that highway issues were a major issue in the community and have included information that has gone through Longtown and Bewcastle Neighbourhood Forum.

The Market Town Initiative had carried out a Parking Survey. Although not part of the consultation we have included their findings in the action plan.

A Housing Needs Survey was carried out in 2009 by Cumbria Rural Housing Trust. Although the return rate for this was low it has given an indication of the future housing needs we face.

We hope you will agree that with your help we have put together a document that will improve the quality of life and develop amenities and services in our community,



Arthuret Parish Process

How top issues were identified

Over 1,600 ideas were collected from the people who live and work in Arthuret Parish. Different areas were identified and all the ideas were sorted under the nine action plan headings. Focus Groups were set up to look at each of these and identify the priorities for the future in line with what the community told us they want. Local people, with the help and support from relevant agencies undertook this work.

How the Focus Groups consulted the community

Through meetings, one to one discussions, workshops and surveys, we were able to get the views from the following.

- Longtown Primary School pupils
- William Howard School pupils living in Arthuret
- Barnardos/ Parents Group
- Youth Groups / workers
- Age Concern
- Evergreen
- Bowling Club
- Businesses
- Esk Medical Centre

Heritage and Culture

The Heritage and Culture Action Plan was based on a wide ranging consultation. Information was derived from Longtown Moving Forward; Longtown Memorial Hall Community Centre Heritage Feasibility Study and Business Plan produced by Glamis Consultancy, working with Carlisle City Council and Hadrian's Wall Heritage Ltd.

Additional information was gathered from Open Days including an event organised with The Groundwork Trust. Focus Group meetings were also held.

Young People

The Young Peoples' Action Plan is based on discussions, meetings, surveys, questionnaires etc. held with young people incorporating wider community feedback. Meetings were held with young people at Longtown Primary School and William Howard School to discuss the issues that affected them and their aspirations. The Primary School children produced paintings illustrating their future visions for the community. Additional information was gathered from the Longtown Youth Project, Longtown Moving Forward and Open Days.

Business and Economy

A specific "business speed dating" event acted as the centrepiece for gathering information. The work of the Longtown Market Town Initiative was also referenced. A business questionnaire was distributed. Carlisle City Council provided considerable business and economic data.



Housing

Views were obtained from the Rural Housing Survey produced by the Cumbria Rural Housing Trust, Open Day events, discussions with the Tenants' Groups and Riverside.

Community Safety

Open Days provided most of the information. Further input was provided by agencies including the Cumbria Constabulary, Cumbria Fire and Rescue, the Tenants' Groups and Riverside.

Health and Wellbeing

A specific workshop was held in conjunction with the Esk Medical Practice. Followed by a focus group meeting, a questionnaire regarding dental provision was also undertaken.

Highways and Transport

Residents used the Open Days and Neighbourhood Forums to voice comments and concerns. Meetings also took place with Cumbria County Council Highways. Additional information was incorporated through the parish councils

Participation Leadership

Open days and discussion groups were held.

Broadband

The government initiative is to provide superfast broadband in rural communities. The programme in Cumbria is led by Connecting Cumbria and monitored by local Broadband Champions.

Open Days

These were held at The Longtown Memorial Hall Community Centre

Walkabout around Longtown

Included members of Arthuret Parish Council, representatives from Carlisle City Council and The Groundwork Trust



Kirkandrews on Esk Parish Process

The Kirkandrews on Esk Parish Plan questionnaire went to 208 households in the parish. We had 81 replies, plus comments left at the drop-ins, which is an excellent response. Thank you. Roughly 60% of residents who responded had lived in the parish for more than 10 years. Another 25% had lived here for between 3 and 10 years. 14% had lived in the parish for up to three years at the time they replied to the questionnaire.

Environment – footpaths; countryside; fly-tipping/litter; recycling

Fly tipping & littering

What you said:

People in most parts of the parish are concerned about roadside littering. Residents said they would like to see regular litter picking on the verges of the A7 and other roads. Blackspots for fly-tipping and littering on the roadsides appear to be the woods at Blackbank and Greenmill, near the Netherby woodland walks and the A7 layby.

What we've done:

We've passed on some of this information to the City Council Environment dept, so that they know the worst areas. They have been using cameras for surveillance of fly-tipping in the worst affected areas, with some success.

Action for future:

We will continue to report anything that's reported to us, to the appropriate authorities. We'll work with the community police and other local authorities to educate the public from an early age to take their rubbish home.

Footpaths

What you said:

42% said they thought people use public footpaths and rights of way responsibly, but there was considerable concern expressed about dogs not being kept under proper control. Gates are sometimes left open. The danger to dog owners walking through a field of cattle is also a big concern.

There are mixed general comments about the signage and maintenance of public footpaths. Some footpaths are well signed and some are not. Some are overgrown and some are blocked, with damaged stiles. But 38% of responses said that public footpaths and rights of way are well maintained and signed. There is only one bridleway in the parish.

Action for Future:

The County Council is responsible for public footpaths, so if you have any concerns that you want us to pass on to them, please let us know.

The Parish Council encourages responsible use of the countryside, where access is permitted.



Kirkandrews on Esk Parish Process

Refuse & Recycling

What you said:

Most residents have both rubbish and garden waste “doorstep” collections, although a number of residents complained that they have to drag wheelie bins a long way to have them emptied. 17% of residents have glass, tins and newspaper collections and 5% have plastics and cardboard collections.

Plastics recycling would be the most popular doorstep recycling which isn't universal in the parish. Feelings were mixed about more doorstep recycling collections, as newspapers, plastics and cardboard can create a lot of mess in windy weather conditions.

The recycling centre at the Moat is popular and residents of Greenmill Road would like something similar.

Somewhere to recycle batteries would be appreciated.

Recycling school uniforms was suggested and recycling of old wellington boots was requested.

One resident commented that better large item collections might help reduce fly-tipping.

What we've done:

We have asked the City Council about doorstep plastic recycling collections, but were told that in a rural area like ours it would be too costly. As there is already a large plastics cage at Longtown Community Centre, which is quite handy for a lot of our residents, and plastics recycling at the Moat Village Hall, there isn't really anywhere else in Kirkandrews suitable for another cage.

The land at Greenmill Road is currently unadopted, so local councils cannot provide any services within that perimeter fence.

Action for the future:

If you would like to collect your plastics in a reusable green bag, which you can use to take your plastics to be recycled, the City Council has offered to provide bags. Contact the parish council if you're interested.

A Tip for household items was opened at Brampton's Townfoot estate, which saves locals taking large items into Carlisle. (The Tip is free of charge, but there are restrictions on trailer size.)

Highways and transport

Road conditions; Flooding; Speeding; Community transport; Parking

Road conditions

What you said:

61% of respondents said that road conditions in the parish were poor. 31% said they were okay. Pot holes and poor road surfaces, log lorries, the Carwhinley dip and bridge and the condition of the whole road from Longtown to Penton making that stretch of road dangerous, featured heavily in responses. The poor condition of the road from Blackbank to Gretna Green was highlighted several times.

What we've done:

Some highways improvements have been made since the questionnaire went out. The parish council lobbied to have the Blackbank/Gretna Green road resurfaced, and that road has been improved. The road from Longtown towards Penton has also been resurfaced.

We've also raised substantial grant funding towards repainting the cast iron signposts in the parish, to make them more readable and preserve them for their historical value.

The Highways Steward scheme has been working well and there's good regular contact between the parish council chairman and the highways steward.

Action for the future:

The bad winter has done a lot of damage to roads in Cumbria and it seems we might have to expect long delays of up to 18 months, in repairing side roads. The parish council will continue to exert as much pressure as possible to speed up repairs.

A wide range of problems, from potholes to flooding, can be reported to the Highways Hotline.

Kirkandrews on Esk Parish Process

Danger spots

What you said:

The danger spots mentioned included several roads in Arthuret parish. Albert Street in Longtown, the Esk Bridge in Longtown and the blind corner on the first turn out of Longtown on the Netherby Road, are problem areas for Kirkandrews parish residents.

Scotsdyke featured highly because of the speed of the traffic and a lack of pavements.

The junction on the A6071 at Blackbank with the road to Springfield and the Toll Bar junction at Longtown were also listed, along with the Longtown to Penton road.

What we've done:

We have voiced your concerns to Arthuret Parish Council and offered our support in lobbying for improvements.

We lobbied to have green cats' eyes reinstated at the Springfield road junction on the A6071. Highways no longer install green cats' eyes at road junctions.

We have attempted to get traffic calming measures in place at Scotsdyke.

At the request of DSDA Longtown we asked the police to monitor speeds along the stretch of straight road past their main entrance, where workers have to join fast-moving traffic. After monitoring, the conclusion from police was that there isn't a sufficient problem to require further action.

Action for the future:

Residents of Greenmill Road have suggested an extension of the double white lines from the exit of the woods past the Greenmill Road entrance, to prevent dangerous overtaking.

The parish council will support that request.

We will continue to lobby for road safety where we can and promote responsible driving.



Community transport

What you said:

A number of residents would like more access to public transport. 60% of respondents prefer buses, but Rural Wheels, subsidised minibuses and car sharing schemes, were also of significant interest.

What we've done:

The parish council has promoted Rural Wheels in the Esk Parishes magazine.

Action for the future:

The parish council would like to know if anybody in the parish would be interested in setting up a car-sharing scheme. Details about Rural Wheels are given later in this document.

Kirkandrews on Esk Parish Process

Flooding

What you said:

The worst area for flooding appears to be the road between Dickstree and Sarkhall, at Oakbank and Gap Wood, also Becksides and Daffiestown.

What we've done:

We try to keep the Highways department and the highways steward informed about places where flooding has been reported to us, but it's recommended that residents report flooding and other emergencies directly to the Highways hotline.

Action for the Future:

We will continue to report flooding-related highways problems if asked.

Speeding

What you said:

The log lorries on the road from Penton to Longtown, through the Moat, are widely criticised for their speed. The A7 at Scotsdyke and the A6071 at Greenmill are mentioned as speeding "hotspots".

Dickstree Corner is also a cause for concern, for the volume of fast traffic.

Residents requested speed restrictions at Scotsdyke, along the A7.

What we've done:

The parish council lobbied successfully for a 30mph limit at the Moat, which has made some difference, but we are now working with the police to deter and to prosecute speeding motorists. The parish council has also pressed for speed restrictions on the A7 near Scotsdyke.

Action for the future:

We will continue to lobby for safer roads.

Parking

What you said:

No complaints were made about parking in Kirkandrews parish, but a number of residents commented on limited car parking spaces in Longtown.

What we've done:

We have made these views known to Arthuret Parish Council and have been informed that Capita surveyed Longtown a few years ago, concluding that Longtown did not need more car parking.

Action for the Future:

Kirkandrews parish council will continue to support more/better car parking for rural residents who want to stop in Longtown. There is a temporary car park where the Health Centre has been removed on Burns Street.

Pavements

What you said:

Residents of the parish asked for pavements between Gaitle and Greenmill and Blackbank and Greenmill, and the A7 Toll Bar junction, so they could walk to Longtown more safely.

Pavements to the north of Longtown on the A7 needed to be tidied.

The pavements to the north of Longtown have since been cleared.

What we've done:

We've had the pathway from Longtown to Greenmill cleared.

Action for the Future:

We'll continue to pass on your request for improved pavements to Highways.

Kirkandrews on Esk Parish Process

Street Lighting

What you said:

There was a low interest in new street lighting in the parish, and several residents wanted less, not more, but street lighting was requested from the Esk Bridge to the Toll Bar, outside Longtown and also at Blackbank.

What we've done:

We've requested street lighting from the Esk Bridge to Toll Bar.

Action for the Future:

There has been some movement with the requested street lighting from the Esk Bridge to the Toll Bar, but no timescale has been given. We're supporting Arthuret parish council in their request for street lighting on the A7. Some parts of Blackbank are former MOD property and therefore residents are most likely to be responsible for their own street lighting, the same as Greenmill Road. We're unsure which part of Blackbank is asking for street lighting, so will need to follow this up.

We asked you to list the three things you liked least about living in Kirkandrews parish.

What you said:

There was a wide range of complaints. Litter on the roadside verges scored highest as a single issue with 7 mentions. Speeding wood lorries; potholes; no recycling collection and scattered housing with no community spirit, were next with four each. Other answers included no gritting of side roads; ditches not being dug out, leading to flooding; the distance to William Howard School; lack of public transport (Scotsdyke was mentioned in particular); untidy grass verges and no pavements; farmers leaving a mess on the roads; no police with local knowledge; traffic noise; joyriders; isolation; Moat sewage works; no village shop and lack of play areas. Also the cost of council tax, compared to the services we get. It was however, very nice to see 6 people replying "nothing" to the question.

What we've done:

Several of these subjects have already been covered in the previous sections, eg flooding ditches; pavements; litter. The gritting of road surfaces is also an issue that we have discussed after the ice and snow of this winter. The Highways Steward has contacted landowners regarding the ditches.

Action for the future:

We will be pressing for grit to be left in suitable places, in time for winter, so that local people can treat the worst icy areas. We will continue to lobby the City Council to clear litter on roadsides.



Kirkandrews on Esk Parish Process

Young people & Children (and families)

We asked what was needed to improve the play and leisure facilities for children and young people

What you said:

Youth clubs and better footpaths/pavements; more entertainment and facilities for teenagers; evening activities; a community bus to take them curling/ to the ice rink; an ice rink and swimming pool; crazy golf; tennis; trampolines; play bus and toy library.

The most popular idea by far was a play area, with requests from one or two residents of Greenmill Road and Blackbank and a significant number of responses asking for improvements to the existing play area at Kirkandrews Moat.

What we've done:

After requests from residents going back several years, plans are underway to improve the play area at Kirkandrews Moat. A community group has been formed to plan and fundraise for the equipment. Several play equipment manufacturers have provided quotes.

Action for the Future:

The parish council is keen to see play area improvements at the Moat and would gladly support a similar project at Greenmill.

If there is still interest in a community bus/minibus, or the play bus scheme, if you contact the parish council, we will help you to get the information you need.

These results will also be passed on to local groups in our own parish and in Arthuret, who have the facilities to provide services and clubs.

Housing

What you said:

42% of you said there is a need for affordable housing in our parish.

Action for the Future:

There is already social housing in Longtown and new housing being planned for Longtown will provide more affordable housing in the local area.

The parish council are always interested in supporting suitable schemes within the parish.

Community safety

What you said:

41% of respondents think a community police officer would improve our area.

More general policing was requested.

56% of respondents would like to see a Neighbourhood Watch/Farmwatch scheme.

Joy-riding and anti-social behaviour don't appear to be a big problem in this parish.

What we've done:

There has been a community police officer for a number of years and there is a Neighbourhood Watch/Farmwatch in the parish. The parish council has recently been in contact with the police to encourage promotion of these schemes.

Action for the Future:

We will highlight to the community policeman that we are concerned that residents are unaware of his presence in the parish.

Kirkandrews on Esk Parish Process

Community participation etc.

12.5% of residents sometimes feel lonely or isolated.

22.6% of respondents would like to be more involved in community activities, though 48% are happy as they are.

We asked what social activities you would like to see for the whole community.

What you said:

Salsa Dance classes; yoga; pilates; aerobics; bingo; art classes; evening classes; computer training; bus trips for kids; all age events; live music and dances; discos; youth clubs; concerts at the Church; concerts at the Village Hall; film club; cinema at the Village Hall once a month; co-operative for bulk buying oil; hockey; skiing.

Action for the Future:

Live music and various kinds of dancing and exercise seem to be the most popular activities. The parish council will encourage local groups based in Kirkandrews parish and in Arthuret to follow up some of the suggestions made here and to advertise their activities throughout the whole of Kirkandrews parish.

Heritage and culture

We asked what three things residents liked most about living in Kirkandrews parish.

What you said:

The countryside was the most popular answer, with “peaceful” coming a close second. One resident described it as a “rural haven.” The friendly pleasant people and community spirit scored highly, too.

The interesting history of the area was mentioned a few times and the church was high on the list for some residents.

You also showed appreciation of the facilities nearby – the gym and recycling at Longtown Community Centre, Longtown post office, fast food takeaways, Sure Start and the good road and rail links – which mean we get the peace and quiet at home, but can easily travel further afield.

What we've done:

Our parish council is represented on the management committee at Longtown Community Centre and the parish council chairman has also been involved in discussions at the Community Centre about the heritage regeneration project which it is hoped will galvanise some much-needed economic growth in tourism, food and other sectors in the wider Longtown area.

Action for the future:

We will continue to represent the interests of our parish when the opportunity presents itself, aiming to keep its unspoilt, peaceful countryside, but also to interest potential visitors in the rich historical and rural heritage we have on show. Our aim is to improve communication throughout the parish via a website, an annual newsletter and an occasional page in the parish magazine.

Arthuret & Kirkandrews on Esk Action Plan

Participation & Leadership

Issue	Action(s)	How to Tackle It	Lead Organisation & Partners
Access to information & services	Provide information on your local parish councils & other services	Develop partnership working with service providers	Parish Councils , City & County Councils
		Produce a directory of services	Parish Councils
Need for more community volunteers	Support people to take on community roles	Promote, support & training. Volunteer recruitment days, Notice boards	Parish Councils , Carlisle Parish Councils Association, Cumbria Association of Local Councils, Community Centre, Cumbria Voluntary Services
Develop local services	Support existing & develop new services	Promote services	Parish Councils , Carlisle City Council, Cumbria County Council

Broadband

Issue	Action(s)	How to Tackle It	Lead Organisation & Partners
Better Broadband provision	Provide access & improve Broadband speed to all Raise public awareness of local broadband coordinators	Support the Cumbria Broadband initiative. Ensure local needs are met.	Parish Councils, Broadband Champions , Carlisle Parish Councils Association, Cumbria County Council

Housing

Issue	Action(s)	How to Tackle It	Lead Organisation & Partners
Lack of affordable housing to buy	Develop action plan	Use Housing Need Survey to identify actions. Work with Housing Associations	Parish Councils , Cumbria Rural Housing Trust, Riverside and other housing associations
Lack of affordable housing to rent	Raise awareness of the Local Lettings Policy	Circulate information in Esk Lynes and via the local tenants group	Parish Councils , City Council, Riverside, Tenants' Group, Local Lettings Coordinator
Need for balanced housing stock	Influence the Local Development Framework	Respond to City Council needs assessment survey	Parish Councils , Developers, Carlisle City Council.

Environment

Issue	Action(s)	How to Tackle It	Lead Organisation & Partners
Mangement of Public Areas	Maintenance & upkeep of pavements	Engage with Cumbria County Council Highways & Carlisle City Council	Carlisle City Council , Cumbria County Council, Parish Councils
	Address visual impact of Bush Hotel	Lobby owners of Bush Hotel and Carlisle City Council to take action	Arthuret Parish Council , Bush Hotel owners, Carlisle City Council
	Develop Conservation Area Management Plan	Work with Conservation Officer	Arthuret Parish Council , Carlisle City Council
	Build additional bus shelter for school children	Identify need and lobby Cumbria County Council, Identify potential site, Secure funding	Arthuret Parish Council , Cumbria County Council,
	Add additional bus stops outside the Auction Mart and on the Carlisle Rd	Lobby Cumbria County Council	Parish Councils , Cumbria County Council
Improvement of parking in Longtown	Development & enforcement of parking regulations	Articles in newsletters. Lobby Cumbria County Council, Carlisle City Council & Cumbria Constabulary	Parish Councils , Cumbria County Council, Carlisle City Council, Cumbria Constabulary
Allotments	Ensure best use of allotments	Develop management plan	Arthuret Parish Council , Allotment Committee
Recycling	Review management of recycling facilities	Explore the best options for recycling facilities	Carlisle City Council , Cumbria Waste, Community Centre,
Litter	Target littering	Provide extra litter bins. Education & enforcement. Litter pick days.	Parish Councils , Carlisle City Council, Longtown Primary School, Community Police, Riverside Housing Association, Youth Project
Fly Tipping	Tackle Fly Tipping	Education, information & enforcement, urge reporting of offences	Parish Councils , Carlisle City Council, Community Police, Environment agency
Dog Fouling	Address fouling	Encourage owners to be responsible, enforcement of regulations, encourage the reporting of offences	Parish Councils , Carlisle City Council, Community Police
Impact of potential wind-turbine developments	Assess public opinion	Work with appropriate authorities to provide information	Parish Councils , Carlisle City Council, Cumbria County Council, other agencies

Highways

Issue	Action(s)	How to Tackle It	Lead Organisation & Partners
Traffic congestion in Gretna Green Springfield	Slip road for North bound traffic at Junction 45 with M6/M74 or alternative	Alteration of the Northbound slip on to the M74 as it causing major traffic problems in Gretna.	Highways Agency, Springfield & Gretna Green Community Council Kirkandrews on Esk Parish Council, CC Highways Local County Councillor
Poor road conditions & signs Peat Moss road	Improve road surface & signs	Continue to lobby County Council Highways	Kirkandrews on Esk Parish Council , Cumbria County Highways, Local County Councillor
Safety at entrance to Greenmill from A6071	Implement safety measures	Increase length of double white line from edge of wood	Kirkandrews on Esk Parish Council , Cumbria County Highways, Local County Councillor
Poor visibility on A7 to Junction of A6071	Street lighting from the Esk bridge to the junction	Lobby for the street lighting from Longtown to be extended.	Kirkandrews on Esk Parish Council , Cumbria County Highways, Local County Councillor
Safety of drivers and pedestrians at the Border at Scots Dyke	Implement traffic calming measures & footpath provision	Liaise with Scottish Authorities & Cumbria Highways	Kirkandrews on Esk Parish Council , Cumbria County Highways Local County Councillor Scottish Authorities
HGV and high volume of traffic causing damage on Albert St	Continue to lobby Cumbria County Council	Build an alternative route from A7 to A6071	Arthuret Parish Council , Cumbria County Highways Local County Councillor
Speeding on the A7, Netherby Road & other approach roads to Longtown	Implement speed calming measures	More use of Speed Indication Device, Police presence & road safety measures. Extend the speed limit of 30 mph beyond the built up area	Arthuret Parish Council , Cumbria County Highways Local County Councillor
Lack of bus services in rural areas	Explore opportunities for community transport	Identify need. Explore Community Transport and car sharing schemes	Parish Councils , Local County Councillor, Voluntary sector, residents
Inadequate parking provision in Longtown	Evaluate existing parking provision. Educate people to park correctly	Identify area to determine if land/funding is available for car park. Request that illegal parking in bus bays and on corners is addressed	Parish Councils , Police, Cumbria County Highways, City Council & Local Councillors
Affordable bus travel for young people	Discuss with providers	Identify peak times & approach bus companies requesting subsidised fares	Parish Councils , Young People, Cumbria County Council, Bus Companies, Secondary Schools, Local County Councillor
Potholes,	Encourage reporting by all	Monitor progress of repairs	Parish Councils , Cumbria Cumbria Highways, Local County Councillor
Footpath disrepair, obstruction and poor maintenance	Report issues	Lobby Cumbria County Highways & Carlisle City Council	Parish Councils , Cumbria County Highways, City Council & Local Councillors

Health & Well Being

Issue	Action(s)	How to Tackle It	Lead Organisation & Partners
Dental Provision	Prove the need for dentist	Collate existing evidence, carry out additional surveys	Esk Valley Medical Practice , NHS Primary Care Trust, Parish Councils
Access to Health Services	Explore & develop transport solutions	Identify existing & potential transport arrangements	NHS Patients Panel , Esk Valley Medical Practice, Community Groups
Development of Sports Provision	Undertake sports audit	Find gaps & solutions	Parish Councils, Longtown Community Centre , Sports groups, Carlisle City Council
	Upgrade 'Parish Playing Field' including drainage & changing rooms	Develop phased programme of works & identify funding opportunities	Arthuret Parish Council , Cumbria County Council, Carlisle City Council, Groundwork, Riverside Housing Association
	Explore future use of Parish Playing Field MUGA (Multi Use Games Area)	Progress initiative to enhance provision for young people	Arthuret Parish Council , Young people, Cumbria County Council, Carlisle City Council, Groundwork, Riverside Housing Association
Address Community Fitness	Develop Health & Well being	Identify concerns & develop solutions	Parish Councils, NHS, Esk Valley Medical Practice, Carlisle City Council, Community groups
Retaining Elderly Care Provision in Longtown	When Eskdale House is upgraded/rebuilt ensure it is kept in Longtown	Lobby Cumbria County Council. Keep the community informed	Parish Councils , Eskdale House, Cumbria County Council, Local Councillors
Support for Carers	Identify carers needs	Engage with health professionals and other agencies to recognise the needs of carers (including young carers). Explore the opportunities for solutions	Carlisle Carers' Association , Esk Valley Medical Practice

Young People

Issue	Action(s)	How to Tackle It	Lead Organisation & Partners
Lack of organised groups in the town	Identify current provision and gaps	Seek commitment from groups and organisations to deliver in Longtown	Parish Youth Council/ Parish Councils , Carlisle Youth Zone, Youth Workers, Local Churches, Barnardos and other groups
Want Skate board park	Identify suitable location	Secure planning permission if required and funding sources	Parish Youth Council/ Parish Councils , Groundworks, Open Spaces, Riverside Housing, Young People and others.
Lack of events during school holidays	Raise awareness of existing programme of activities and identify gaps in provisions.	Advertise what is currently available. Seek to provide additional activities	Parish Youth Council/ Parish Councils , Carlisle Youth Zone, Police, Local Churches, Youth Project, Local Primary Schools and William Howard, Youth Groups, Barnardos, Carlisle City Council
Dedicated Youth Club	Explore possibilities through discussions with partner organisations to provide a safe, warm environment	Set up working group with interested partners, youth council and young people to progress	Parish Youth Council/ Parish Councils , and other parties
Additional Play equipment at Dukeswood Road Square	Explore feasibility of upgrade to existing playground working on ideas and plans presented by the young people	Seek planning advice and explore funding streams.	Arthuret Parish Council , Carlisle City Council, Riverside, Groundwork and others
Promotion of Young Farmers Club	Raising awareness that the Club is open to all	Advertising campaign through posters, newsletter articles & computers.	Young Farmers Club , schools and other groups.
Improved access to youth workers at the Community Centre	Explore possibilities to continue and develop local provision through discussions with partner organisations	Meeting with partners, youth council and young people to plan	Longtown Community Centre , Carlisle Youth Zone, Youth Council and Parish Council and other youth providers
Establish Youth Parish Council	To promote the concept & long term viability	Recruitment and commitment of parish councillors to implement project. Set up working group to take forward.	Parish Council , Local Schools, Barnardos & others.
Quality of play areas	Identify areas of concern and develop an action plan	Establish priority areas and identify responsible providers. Consult with users on need. Keep local informed through Esk Lynes. Work with partners to implement actions.	Parish Councils , Carlisle City Council, Riverside, open Spaces Team, Groundwork and funding organisations.
Provision of play ground at Greenmill Road	Seek Permission from land owners	Form a local action group. Obtain grants	Kirkandrews on Esk Parish Council , Groundwork & Local Volunteers

Community Safety

Issue	Action(s)	How to Tackle It	Lead Organisation & Partners
Inadequate street lighting	Identify areas of need & upgrade	Establish an ownership & maintenance authorities log	Parish Councils , Cumbria County Council, Carlisle City Council,
Improving residents' perception of safety	Reassurance & education	Increase visible Police presence on the beat Encourage dialogue across the community Promote Neighbourhood & Farm Watch Regular community updates	Police , Local Schools, Churches, Cumbria County Council, Carlisle City Council, Parish Councils, Tenants Group, Youth Project, Housing Association(s)
Anti-social behaviour and vandalism	Encourage reporting of incidents Tackle root causes through multi-organisation approach	Education throughout the community. Visible Community Police presence Neighbourhood & Farm Watch Regular community updates	Police , Local Schools, Churches, Cumbria County Council, Carlisle City Council, Parish Councils, Tenants Group, Youth Project, Housing Association(s) CADAS
Intergenerational respect	Encouraging joint working with all age groups	Promoting and assisting different age groups to work together. Identifying a variety of approaches working with partner organisations.	Churches, Youth Project, Age UK, Barnardos , Community Police, Longtown Primary School, William Howard School, Connexions, Cumbria County Council, Carlisle City Council, Parish Councils, Tenants Group, Riverside and local youth groups
Ensuring future of local emergency services	Monitor provision. Be prepared to justify the need	Provide up to date information to the community. Work in partnership with emergency services. Encourage local participation in supporting the existing services.	Parish Councils , Cumbria County Council, local councillors, Fire Service, Police Service, NHS-Ambulance Trust and other agencies.
Disabled access to bus service	Improve access at bus stops in Swan St	Lobby the County Council Bus Stop Committee	Arthuret Parish Council , Cumbria County Council, bus companies

Heritage & Culture

Issue	Action(s)	How to Tackle It	Lead Organisation & Partners
Enhance local heritage & culture	To develop historical interest	Produce maps information, leaflets, interpretation boards, website	Parish Councils , Hadrian's Wall Heritage Ltd, Cumbria County Council, Carlisle City Council, local historians and heritage groups
	To develop a centre featuring, genealogy, local social and natural history	Feasibility Study & formation of steering group	Parish Councils , Hadrian's Wall Heritage Ltd, Cumbria County Council, Carlisle City Council, Longtown Community Centre, local historians and business groups
	Improve signs to local places of interest	Audit existing signs & identify gaps. Erect suitable signs.	Parish Councils , Cumbria County Council, Carlisle City Council, local historians and businesses.
	Provide a programme of heritage and cultural events	Produce a directory of local groups & organisations, create a diary of current events and promote using community websites & publications.	Parish Councils , Churches, Longtown Business Group, Longtown Community Centre.
		Produce a programme of family events	Barnardos , Longtown Community Centre, Parish Councils, Churches, Longtown Business Group.
		Explore the interest in twinning with Longtown on the Welsh Border.	Parish Councils , schools
		Investigate the potential of a performing arts programme & re-enactment events	Longtown Community Centre , Parish Councils, Arts College Carlisle, Arts Council, theatre companies
	Explore possibility of reinstating the part of Waverley Railway Line as a visitor attraction	Feasibility Study & formation of steering group	Steering group

		<u>Heritage & Culture</u>	
Issue	Action(s)	How to Tackle It	Lead Organisation & Partners
Restoration of Rights of Way to promote local heritage	Assess the condition of Rights of Way	Develop restoration & maintenance plan using the existing rights of way survey	Parish Councils , land owners, farmers, Cumbria County Council Rights of Way Officer, CLA & NFU
	Footpath network	Promote creation of foot path network including Permissive paths & Rights of Way	Parish Councils , landowners, farmers, CLA & NFU
	Develop network of natural history walks including River Esk & ponds	Identify and develop wildlife habitats.	Local nature groups , farmers, land owners, Cumbria Wild Life, Parish Councils
		Provide promotional materials	Local nature groups , Cumbria Wildlife, Parish Councils
	Develop a network of historical walks	Identify routes linking historical sites and develop a programme of restoration and promotion.	Local historical groups , English Heritage, landowners, farmers, Parish Councils,
	Develop a network of cycle routes	Identify routes	Parish Councils , County Council Highways, Sustrans, cycling groups
Responsible use of countryside	Educate & promote	Leaflets, signs, local campaigns	Parish Councils , Schools, landowners, farmers, CLA, NFU & local groups
Promotion of Longtown as a visitor destination	Encourage promotion of local websites & newsletters	Determine what websites & newsletters are currently active & encourage linking	Parish Councils, Longtown Community Centre and other partners
	Develop Heritage and Visitor Information Centre to raise awareness of local history & culture	Feasibility study. Prepare a business plan. Identify and secure funding package. Implement development programme	Longtown Community Centre Trustees , Longtown Business Group , Hadrian's Wall Heritage Ltd, Carlisle Tourism Partnership, Carlisle City Council, Parish Councils
	Promote Longtown as a base to access country pursuits	Workshop for businesses to identify actions. Explore funding opportunities	Carlisle Tourism Partnership , local businesses, land owners, farmers, Parish Councils, CLA, NFU & other partners
	More informative and high visibility signs regarding local facilities on key access points into the town	Audit of existing signs and identify gaps.	Parish Councils , Cumbria County Council
	Improve existing car parking facilities.	Identify gaps & implement enhancement	Arthuret Parish Council , County Highways, Carlisle City Council

Business & Economy

Issue	Action(s)	How to Tackle It	Lead Organisation & Partners
Improving Longtown as a rural service centre	Encourage new ways to access banking services	Explore the availability of other banking services including the Post Office & other providers.	Longtown Business Group , Carlisle City Council, Parish Councils
	Develop retail support schemes to encourage new & existing businesses	Shop advisory scheme. Act upon the proposals resulting from this action.	Longtown Business Group , Carlisle City Council, South Lake Development Trust
	Establish a local business network to provide a commercial focus for town development	Identify Community Business Champions and businesses and invite to be part of a business network.	Longtown Business Group , Carlisle City Council, Carlisle Tourism Partnership, Business Link
	Introduce cost effective customer loyalty scheme for town and hinterland residents	Visit other market towns to identify good practice. Explore options for promoting local produce including a customer loyalty scheme.	Longtown Business Group , Carlisle City Council, Carlisle Tourism Partnership, Business Link
To develop new and existing businesses in Longtown	Provide access to business advisory support	Develop linkages with the Business Link North West and Longtown Local Links to promote access to business advisory services. Organise a 'Meet the Agencies' event.	Longtown Business Group , Carlisle City Council, Business Link, Cumbria Rural Enterprise Agency
	Ensure availability of commercial accommodation that is fit for purpose and widely promoted Establish marketing to encourage new and expand existing businesses	Mapping exercise for supply/demand of commercial premises to identify gaps in provision.	Carlisle City Council , Business Link
	Raise awareness of training opportunities for career development	Jobs Training Fair. Work with partners to explore outreach delivery of training. Possibly join with business event.	Carlisle Employment Partnership
	Market & support use of local produce	Develop a directory of local producers. Determine interest and provide an event for producers and buyers.	Longtown Business Group , Carlisle City Council, Cumbria Rural Enterprise Agency
	Provide support for farm diversification opportunities	Raise awareness of advisory services	Carlisle City Council , Business Link, Cumbria Rural Enterprise Agency

